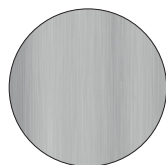
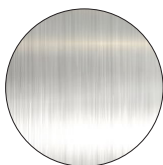


# PRODUCT DATA SHEET

## EDY

Indoor - outdoor lamp in the suspension and floor versions.  
Body lamp in anticorodal aluminium and support in AISI 316 steel. The diffuser has the shape of an Edison E-40 bulb in transparent methacrylate and partially sandblasted at the top.  
Integrated power supply.

**PRODUCT CODE:** EDY - F60 - SWW - AL BR  
- F80 - 12 - WW - AL PO  
- S - NW



<https://www.lucecontrocorrente.com/prodotti/39-edy>

**DELIVERY TIMES:** 4/6 Weeks from order confirmation

### PHYSICAL CHARACTERISTICS

Assembly	Floor   Suspension
Finishing	Polished Alum. Brushed Steel   Polished Alum. Polish. Steel
Hardware	Stainless
Gaskets	N.B.R.
Hollow press	Nickel-plated brass
Degree of protection	IP65
Body	Aluminium Anticorodal - Steel 316
Environment of use	Indoor   Outdoor
Operating temperature	-10°/+40° C

### ELECTRICAL CHARACTERISTICS

Lamp holder	-
Power supply	Built-in
Tension	230Vac
HZ	50-60Hz
Max Watt	12 W
Emission angle	360°
Diffuser	Glossy methacrylate
Reflector	-

### LIGHT SOURCE CHARACTERISTICS

Light emission	1490   1500   1630 lm
Type of Source	Led COB
Color temperature	4000° K
Optical characteristics	Diffused Light

# TECHNICAL DRAWING

